



## ECLIPSE® PROSTHETIC RESIN SYSTEM

### Eclipse® Heat & Seat™ Hard/Soft Nightguards.

Here's another reason to equip your lab with the Eclipse Prosthetic Resin System - the premier Eclipse® Heat & Seat™ nightguard. Made with Eclipse Resilient Soft Resin and Eclipse Clear Baseplate Resin, it features a hard outer layer to provide a firm occlusal surface, and a thermoplastic Resilient inner lining to aid in delivery and retention.

To learn more about the Eclipse Heat & Seat nightguard, contact your Dealer of choice, DENTSPLY Trubyte Sales Representative or call 1-800-786-0085.

**DENTSPLY**  
TRUBYTE

*The chemistry of a great smile.™*

DENTSPLY International, P.O. Box 872, York, PA 17405-0872 1-800-786-0085  
DENTSPLY Canada, 161 Vinyl Court, Woodbridge, ON L4L 4A3 1-800-263-1437  
www.dentsply.com www.trubyte.dentsply.com www.trubyte.dentsply/eclipse.com  
©2003, 2004, 2005 DENTSPLY International Inc. All rights reserved.  
Form No. 4326-1 (2/05)

**Rx**only

# Fabrication Technique For A Heat & Seat™ (Compliant) Splint/Nightguard



**1** If necessary, block out any severe undercuts on the lingual, buccal, and interproximal, and then duplicate the model. Paint the model with Al-Cote® Separating Agent and allow it to dry.



**2** Remove Eclipse® RESILIENT Resin from the package. (Note: Chill under cold running water for 15 – 30 seconds to facilitate removal of material from the package).



**3** Warm the model for 1 – 2 minutes in the DENTSPLY® Conditioning Oven or by using the DENTSPLY Hot Air Gun. Model must be warm for the Eclipse RESILIENT Resin to stay in place against the model.



**4** Adapt the Eclipse RESILIENT Resin onto the occlusal and interproximal surfaces of the model. Also bring material down onto the buccal and lingual as needed. Normally there is no need to extend material below the height of contour.



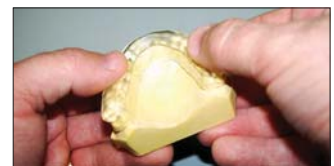
**5** If desired, cusp tips may penetrate through RESILIENT Resin and into the hard resin. Score any excess resin with a sharp instrument and cure in the Eclipse Processing Unit (menu #6) for 4 minutes.



**6** Immediately after processing, the excess RESILIENT material may be removed. The RESILIENT Resin will not displace and is now warm for the addition of the hard Eclipse Clear Baseplate Resin.



**7** Remove Eclipse Clear Baseplate Resin from package and place sufficient amount on top of the RESILIENT Resin.



**8** Adapt Eclipse® Baseplate Resin on the occlusal and incisal surface of the appliance, ONLY, and smooth with a finger. There is no need to extend the Baseplate Resin over the buccal or lingual sides of the RESILIENT Resin.



**9** If necessary, warm the resin with the DENTSPLY Hot Air Gun for easier adaptation. Smooth the junction between resins with the DENTSPLY Electric Spatula or Hot Air Gun.



**10** Place the model back on the articulator, coat the opposing dentition with Eclipse Model Release Agent. Then gently tap in the occlusion until the pin is down. If needed, additional material can be added. Once the pin is down, the splint can be put through lateral excursions if desired.



**11** Remove the model from the articulator and paint the entire appliance with Eclipse Air Barrier Coating. Immediately process (menu #7) in the Eclipse Processing Unit. After the curing cycle, allow the appliance to cool down to room temperature before rinsing off the Air Barrier Coating.



**12** Remount on the articulator and verify the occlusion if necessary.



**13** Soak the appliance on the model in warm (130° F) water for approximately 10 – 15 minutes to re-hydrate the cast and facilitate removal from the model.



**14** De-cast, finish, and polish.



**15** Fit the splint back to the master model. (Note: Soaking the appliance in warm (130° F) water will soften the Eclipse RESILIENT Resin and aid seating back on the cast.)



**16** Deliver back to the dental office and the patient.

**Note: Advise doctor and patient to warm appliance in 130° F water before inserting and removing.**